

Reverse Glass Art Today

After 1945, reverse glass art experienced an upswing that continues to the present day, with contemporary artists such as Frida WirtlWalsler, Juschi Bannaski, Jan Kummer and Thilo Westermann further developing the medium.

The proximity to the works of the 18th and 19th centuries in the historical rooms of the museum provides visitors with a new view on this technique. The exhibition highlights the topicality of this special art genre.



6

- 1 Walter Dexel, Locomotive in Tunnel, around 1916/17, private collection, ©VG Bild-Kunst Bonn 2024
- 2 Gabriele Münter, Female Circus Rider, 1917, Schloßmuseum Murnau, permanent loan from the PSM private foundation Schloßmuseum Murnau, ©VG Bild-Kunst Bonn 2024
- 3 Valentine Prax, Youth, 1928, private collection, ©VG Bild-Kunst Bonn 2024
- 4 Nell Walden, Glass Painting 42, 1918, private collection
- 5 Oskar Schlemmer, Return of the Prodigal Son, around 1940, private collection
- 6 Werner Schriefers, Building with Domes, 1949, Schloßmuseum Murnau, permanent loan from the PSM private foundation Schloßmuseum Murnau
- 7 Frida WirtlWalsler, Nuisance, 2017, private collection

The exhibition is accompanied by lectures by Dr. Brigitte Salmen, Murnau, Diana Oesterle, Munich and the reverse glass artist Thilo Westermann, Berlin as well as painting workshops and guided tours. Please see the website for dates: www.museum-werdenfels.de.

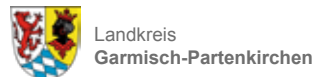
The exhibition is sponsored by the Brougier-Seisser-Cleve-Werhahn-Foundation and the District of Upper Bavaria. (Bezirk Oberbayern).



7

Cover: detail from no. 6; center: Detail from no. 4 | Desing: Andrea Sorg

**museum
werdenfels**
DAS LANDKREISMUSEUM
GARMISCH-PARTENKIRCHEN



Museum Werdenfels
Ludwigstraße 47 | 82467 Garmisch-Partenkirchen
tel : +498821 – 751 710 | info@museum-werdenfels.de
www.museum-werdenfels.de

Opening times: Tuesday–Sunday, 10am–5pm
Also open on Mondays that are public holidays.

Parking is available in the underground car park in Badgasse.

**museum
werdenfels**
DAS LANDKREISMUSEUM
GARMISCH-PARTENKIRCHEN



**Brilliance &
Transparency**
Reverse Glass Art
from Modernism to Today

Nov. 30, 2024 — March 2, 2025

Fascinating Brilliance and Transparency

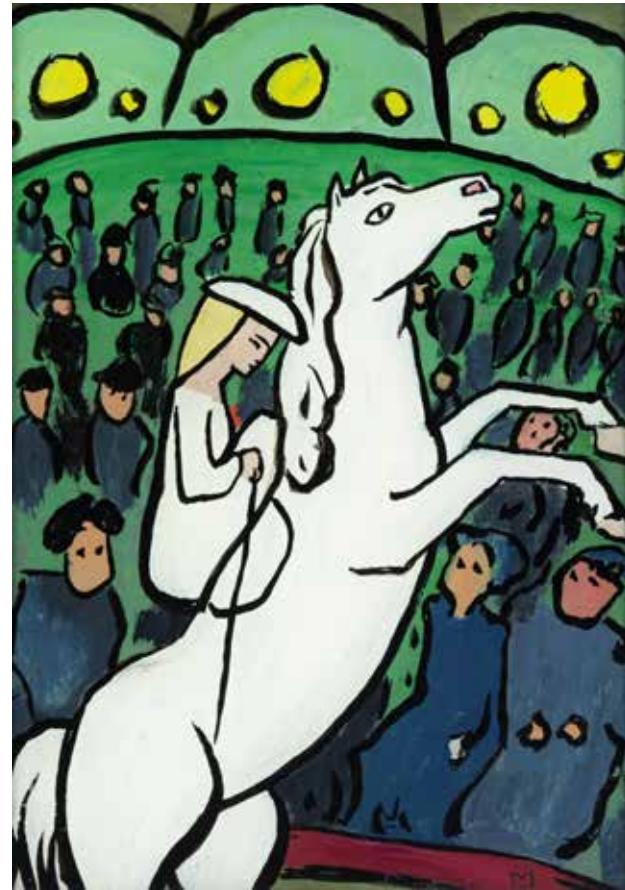
At the beginning of the 20th century, reverse glass art experienced a significant rediscovery. What began with Wassily Kandinsky and Gabriele Münter in Murnau around 1908 developed internationally into an important medium of expression that numerous artists used in the early 20th century. Reverse painting on glass gave important stimulus for new paths in art, as the brilliance and colorful luminosity of a reverse glass painting is fundamentally different from canvas painting - and continues to fascinate artists to this day. The volatile meaning of the material glass, from its idealized representation in expressionism to its functional use in modernism, also played an important role in the use of this image medium.



1

Widespread in Modernism

From 1912 onwards, the Berlin gallery "Der Sturm" (the storm) intensively promoted modern reverse painting on glass. Artists such as Walter Dexel, Carlo Mense and Nell Walden transported the avant-garde motif and design vocabulary into reverse glass art by experimenting with expressive color applications and collages. After the First World War, a young generation of artists brought new approaches: In Paris, Valentine Prax created sensual narratives behind glass, while Étienne Cornault took up surrealist motifs in mysterious mirror images.



2



3



4

The Diversity of the Technique

In a region traditionally significant for reverse painting on glass, the diversity of modern and contemporary reverse glass art is presented for the first time. In addition to works by artists from the "Blaue Reiter" (blue rider) environment such as August Macke and Heinrich Campendonk, the exhibition shows works by painters from the 1920s and 1930s such as Lily Hildebrandt, Max Wendl and Oskar Schlemmer, which demonstrate the abundance and reflect the creative use of this special technique. For the first time, the interrelationships between reverse painting on glass and other media such as film, photography and collage are shown in this exhibition.



5